



Unlocking BIBFRAME

Practical Insights
from Alma and Primo



Making it Work... Together



Better

Discoverability



Community

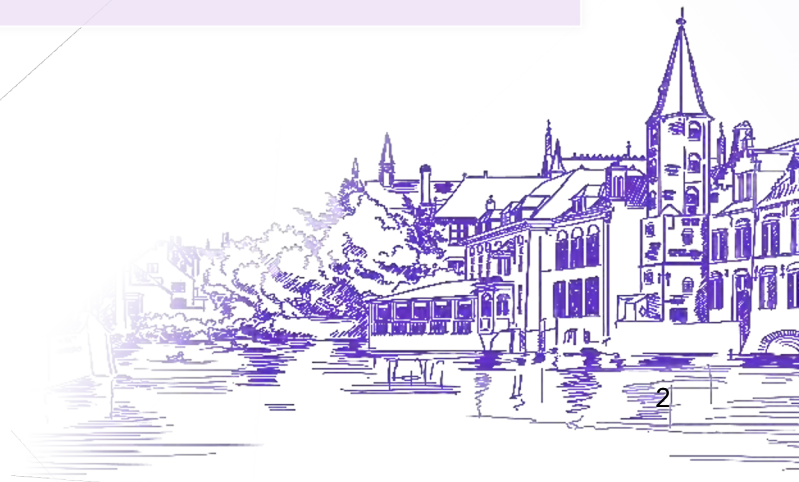
Collaborative



Cataloging

Global

Interoperability



Thank You, Linked Data Focus Group!



Harvard

Princeton

UC DAVIS

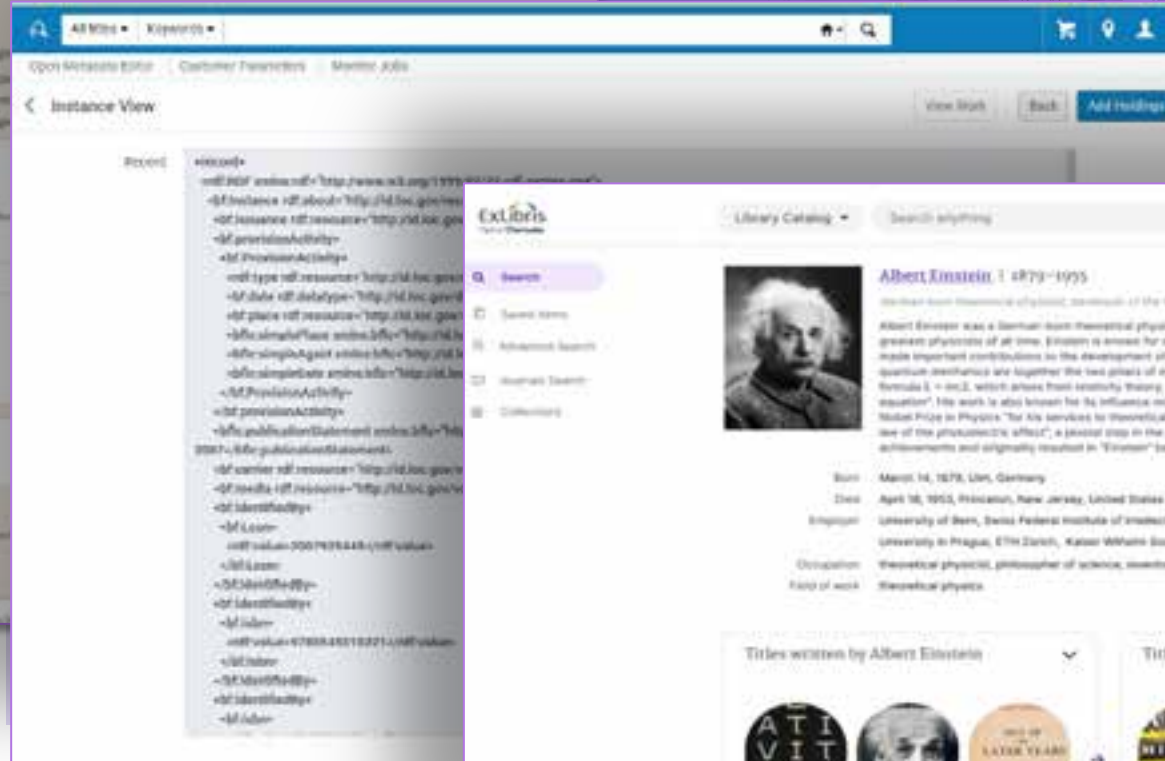
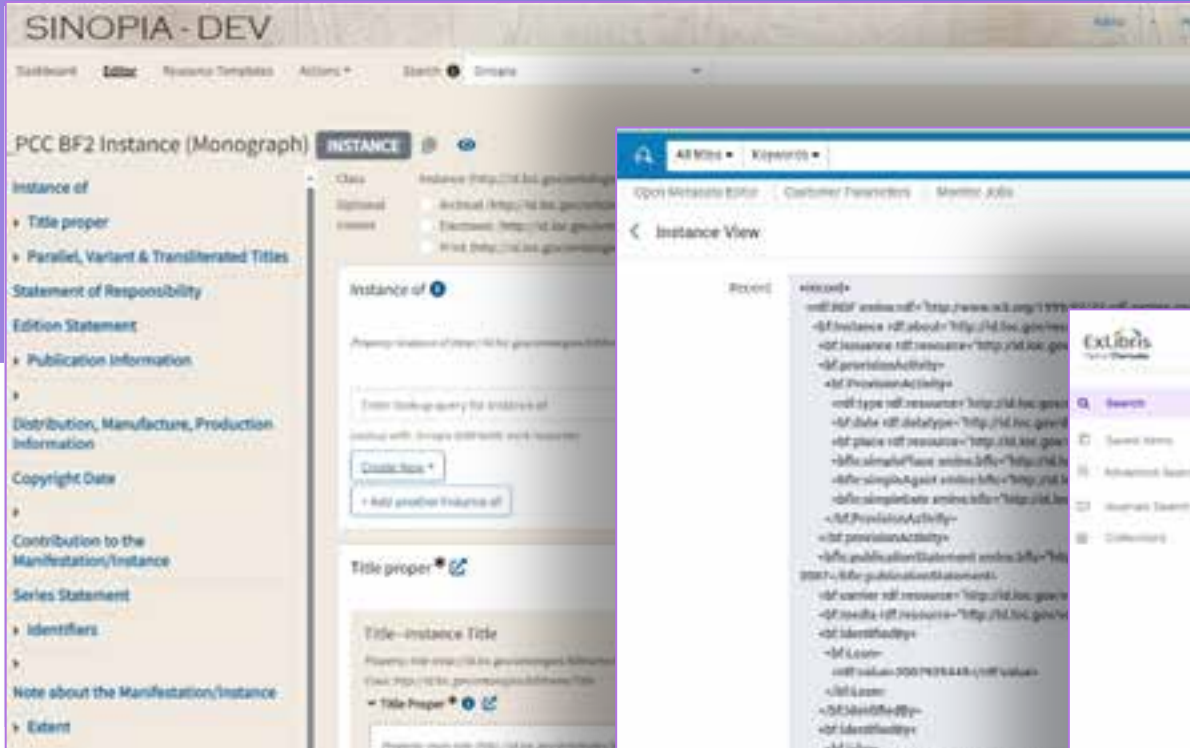
The Goal: End-to-End Workflow

From Sinopia, via Alma to Primo

SINOPIA

Alma

Primo



Stages of Support for Linked Open Data



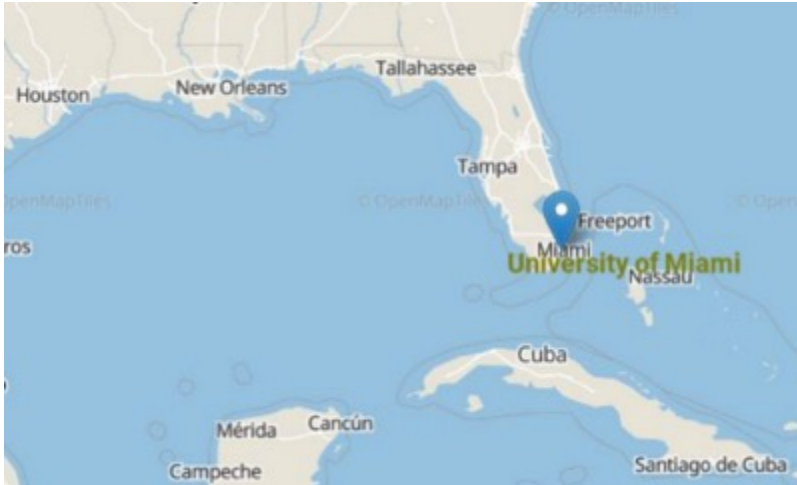
-
- 1** Support core functionalities

 - 2** Enhance existing capabilities

 - 3** New linked data features



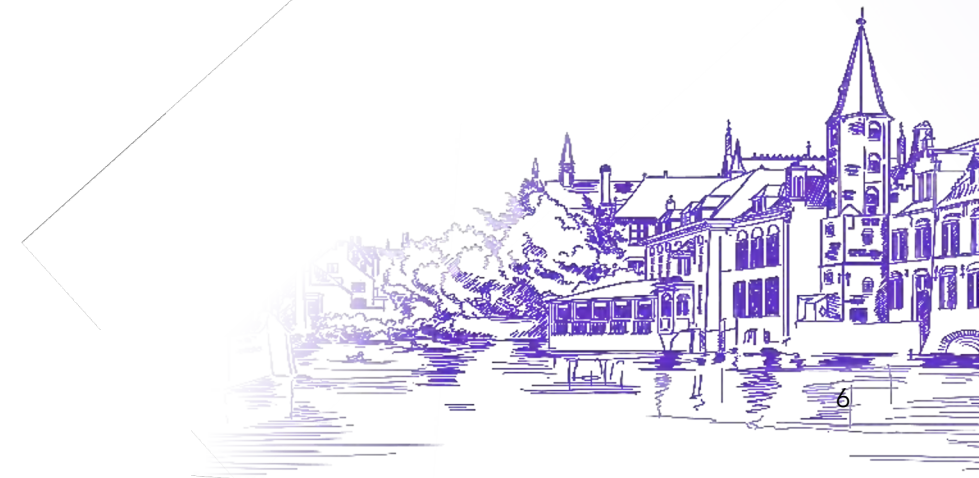
University of Miami



- Private university founded in 1925.
- Located in Miami, FL USA
- 19,000+ students
- UM Libraries:

Architecture, Business, Medical, Music, Marine Science, Interdisciplinary (Main Library) and **LAW**.

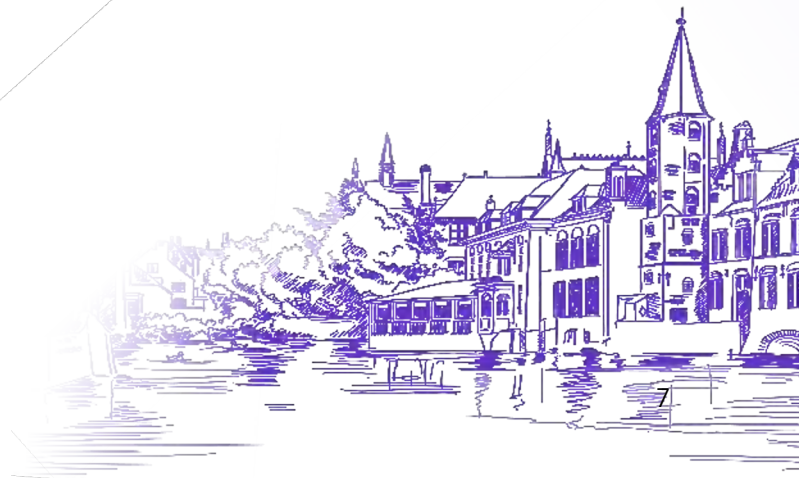
4.5 million active titles





Being Part of the Focus Group

- Work collaboratively with Ex Libris and be part of the development process.
- Group members (11 institutions) met twice a month for a year (June 2023-May 2024) via TEAMS. Currently, we meet once a month and there are two new members.
- Each institution defined the catalog scope and cataloged it in Sinopia Dev.
- Test Sinopia-BIBFRAME records in Alma and Primo Sandbox.
- Give feedback on the workflows, needed fixes, and critical enhancements
- Participate in discussions about new developments and functionalities
- Contribute to the implementation of making ALMA a linked data environment





Pilot Project at the UMiami Law Library

What works?

Law Library BIBFRAME pilot project collection:

Print monograph records from our *Faculty Publication* collection.

1. Re-cataloged MARC titles in Sinopia-BIBFRAME using the print monograph template
2. Integrated Sinopia with ALMA Sandbox via API
3. Exported BIBFRAME records (Work and Instance) from Sinopia to Alma Sandbox
4. Worked with BIBFRAME records in ALMA Sandbox, like any other MARC record. Added holdings, items, placing orders and perform the rest of the cataloging tasks.
5. Visualized BIBFRAME records in Primo VE Sandbox.
6. Published BIBFRAME as MARC in OCLC
7. ALMA's new feature: INFOCARD enhances the discoverability of authors and contributors in ALMA and PRIMO.





Pilot Project at the UMiami Law Library

What doesn't work yet?

- Alma lacks an integrated Linked Data editor.

BIBFRAME record can't be edited in the ALMA metadata editor. Any update needs to be done in Sinopia and then exported again to ALMA.

- Normalization Rules
- Punctuation
- Import Embedded Order Records (EOD) for BIBFRAME records
- Publish BIBFRAME as BIBFRAME in OCLC
- Export items from Sinopia to ALMA
- BIBFRAME records batch cataloging



Thank you!

BIBFRAME Support for Existing Workflows in Alma



Open platform

- APIs for BIBFRAME work and instance
- BIBFRAME in SRU (as BIBFRAME and as MARC)



Fulfillment and Acquisitions

- Add PO lines
- Lend to patron



Search

- Standard indexes
- Work URI (parent URI)
- Instance URI (title URI)
- Person Entity



Discovery

- Discoverable in Primo
- New Dedup keys
- New FRBR keys



Resource Management

- Add to sets (hybrid or single metadata format)
- Add to portfolio
- Add holdings and item
- Publish as MARC and as BIBFRAME



Analytics

- Support for instance
- Support for work



So, What's Next?



Linked Open Data Functionalities For All Formats - Alma

The screenshot shows a search results page with a sidebar on the left containing various filters. The main area displays a list of search results, with the first few items partially visible. The filters include:

- Material Type: Book (1044), Journal (11), Map (2), More (2)
- Resource Type: Audio music... (267), Audio music... (232), Audio nonmusi... (3), More (11)
- Language: Chinese (5), Czech (1), Danish (2), More (22)
- Publication Year: 1800 - 1887 (56), 1888 (480), 1889 - 1987 (453), 1988 - 2001 (440), 2002 - 2014 (389)
- Collections: Art titles (2)

Contributor Page

Generate new search



Beethoven, Ludwig van, 1770-1827

German composer (1770–1827)
Born 1770-12-17, Bonn (Germany)
Died 1827-03-26, Vienna (Austria)

Field of Work Music
Occupation Composers, Pianists

Ludwig van Beethoven (baptised 17 December 1770 – 26 March 1827) was a German composer and pianist. He is one of the most revered figures in the history of Western music; his works rank among the most performed of the classical music repertoire and span the transition from the Classical period to the Romantic era in classical music. Beethoven's career has conventionally been divided into early, middle, and late periods. His early period, during which he forged his craft, is typically considered to have lasted until 1802. From 1802 to around 1812, his middle period showed an individual development from the styles of Joseph Haydn and Wolfgang Amadeus Mozart, and is sometimes characterized as heroic. During this time, he began to grow increasingly deaf. In his late period, from 1812 to 1827, he extended his innovations in musical form and expression. Born in Bonn, Beethoven displayed his musical talent at a young age. He was initially taught intensively by his father, Johann van Beethoven, and later by Christian Gottlob Neefe. Under Neefe's tutelage in 1783, he published his first work, a set of keyboard variations. He found relief from a dysfunctional home life with the family of Helene von Breuning, whose children he loved, befriended, and taught piano. At age 21, he moved to Vienna, which subsequently became his base, and studied composition with Haydn. Beethoven then gained a reputation as a virtuoso pianist, and was soon patronised by Karl Alois, Prince Lichnowsky for compositions, which resulted in his three Opus 1 piano trios (the earliest works to which he accorded an opus number) in 1795. His first major orchestral work, the First Symphony, premiered in 1800, and his first set of str...

[See More In Wikipedia](#)

Source: Library of Congress Name Authority and Wikidata

Contributor Page

Contributor of Titles (1 - 5 of 33)

-  **Piano sonata no. 23, in F minor, op. 57 ("Appassionata")**
By Beethoven, Ludwig van, (New York: RCA [1979])
MMS ID 9998557190001021
-  **Favorite Beethoven sonatas.**
By Beethoven, Ludwig van, (Columbia 1977)
MMS ID 99107848210001021
-  **Sonata no. 1 in F major for cello and piano, op. 5, no. 1 ; Sonata no. 2 in G minor for cello and piano, op. 5, no. 2 Beethoven.**
By Beethoven, Ludwig van, (New York : CBS Masterworks c1982.)
MMS ID 99111857060001021

Work Search

The screenshot displays the ExLibris Work Search interface. At the top, navigation links include Manage Users, Reading Lists, Courses, Citations, Manage Sets, Publishing Profiles (Resources), Publishing Information, and Monitor Jobs. The main search area shows 'Work Search (1 - 20 of 900,775)' with a search bar and sorting options (Title, Rank). A left sidebar contains filters for Language (Afrikaans, English, Basque), Edition (Facet Text), Date (from work), and Resource type (Text, Audio, Motion Picture). The search results list several works, with the first one being 'War and peace / a novel by count Leo Tolstoy ; translated from the Russian by Constance Garnett.' A detailed view of this work is shown on the right, including a 'Quick Access' menu with options like Summary, General information, Bibliographic Record, Contributors, Subjects, Instances, and Related Works. The 'Instances' section shows two entries with their respective Identifiers, Status, and Edition Statement.



Note: The image is for illustrative purposes only

Work Consolidation with AI

- Using the work search as a platform for title matching and consolidating titles into works.
- Title Match for MARC and BIBFRAME
 - For duplication prevention, comparisons, copy cataloging, inter-library loans, weeding, retention, transitioning into full BIBFRAME and more
- Work Creation
- Today - rule-based, Tomorrow - AI



Linked Open Data Form Editor

Our Goal

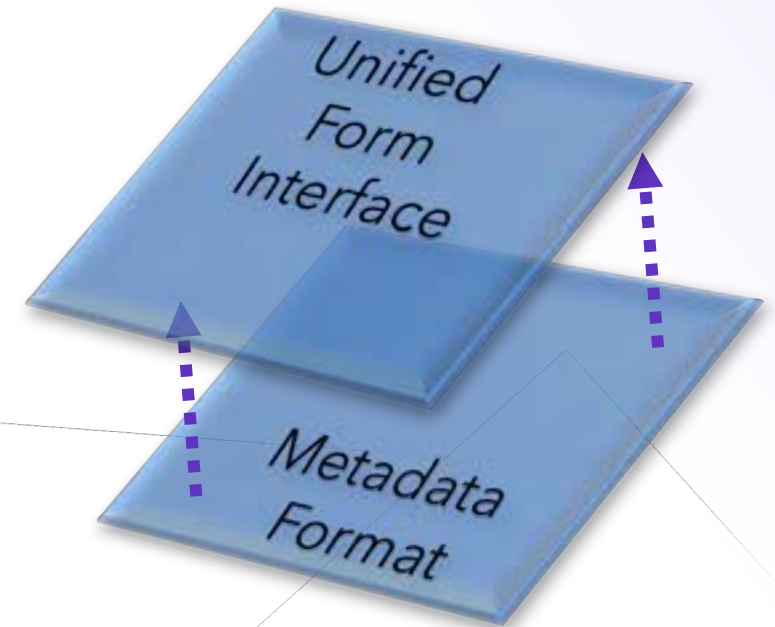
- Integrated form editor with resource management workflows
- Easy and flexible user interface
- Based on external ontology
- Display focus on labels
- Additional ontology metadata one click away



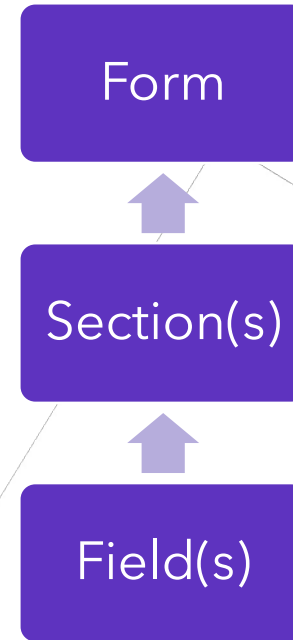
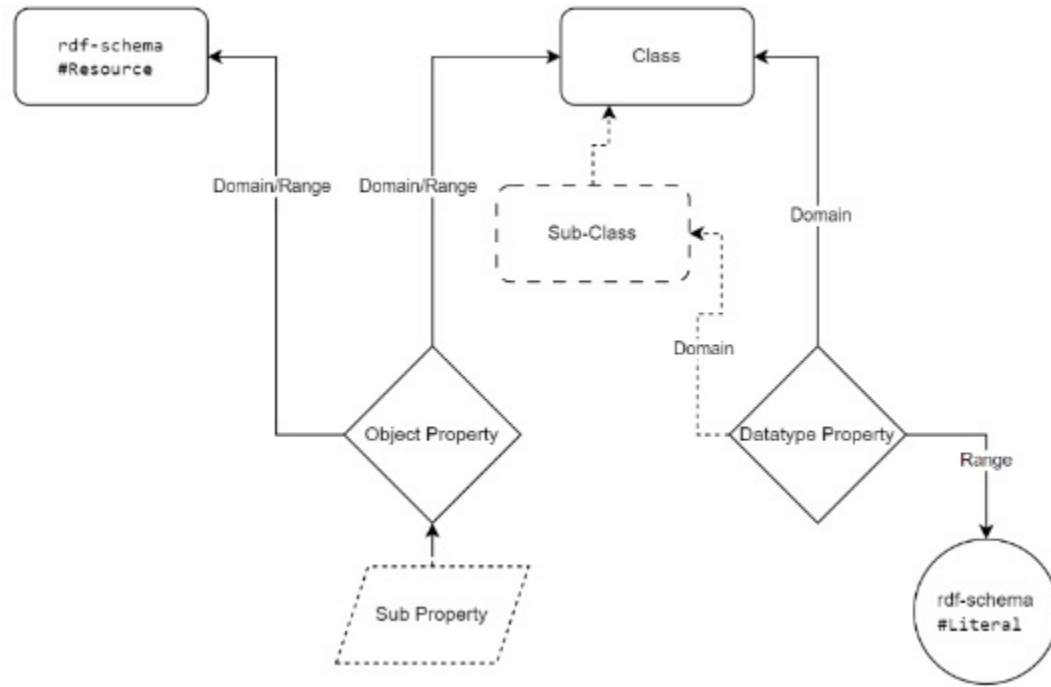
Linked Open Data Form Editor

Our Approach

- A unified form interface with minimal changes between metadata formats.
- Optimal workflow best suited for catalogers.
- The ontology helps define the form (what attributes are used and the relation between them).



Form Creation: Ontology-Based



Splitting the process into different logical levels while still based on the Ontology.



Where Do the Challenges Lie?



Interchange and Interoperability



Conversion between
formats



Eco-System
performance

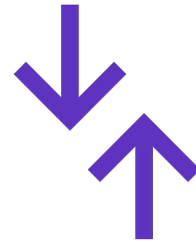
Eco-System Performance



Caching and Labels



Lookups for manual use



Linked Data Services



Supporting Multiple Formats

- Alma is and will continue to be a multi-format system.
- With the help of the community, we plan to support additional formats.
- Alma will provide the infrastructure and the community will provide the mappings of the different ontologies.



Shifting from Innovators to Early Adopters



Showing the
Benefit

Improving
Workflows

Simplifying
Functionality



Thank You.

adina.marciano@clarivate.com

mperezm@law.miami.edu



© 2024 Clarivate

Clarivate and its logo, as well as all other trademarks used herein are trademarks of their respective owners and used under license.